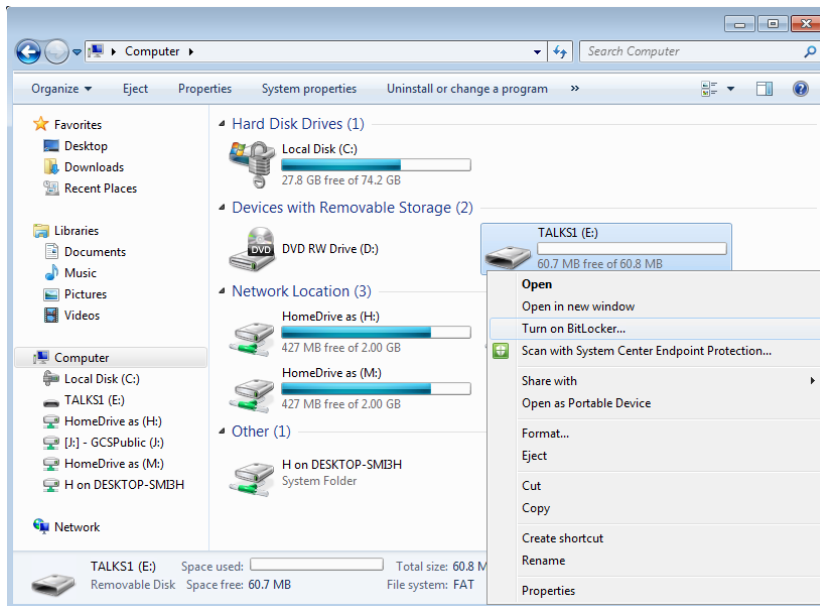


Windows USB Storage Device Encryption

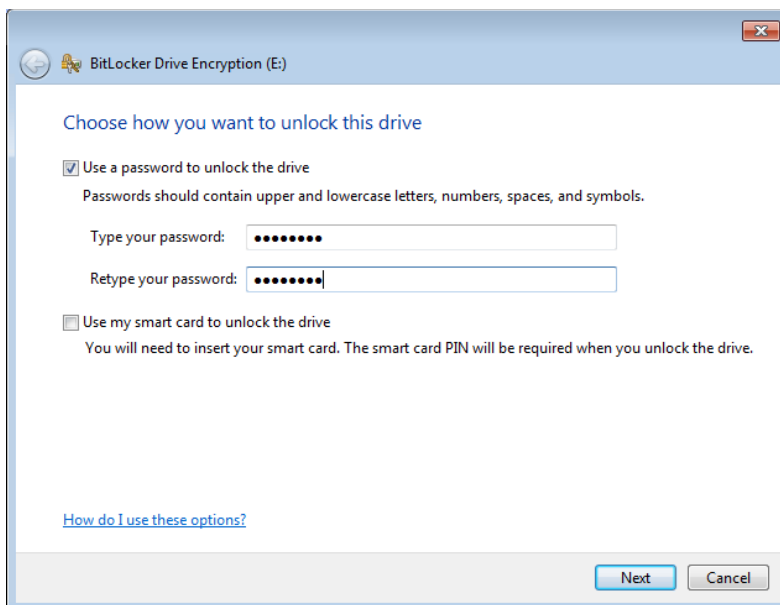
This guide takes you through the process of encrypting a USB storage device (e.g memory stick or external hard drive) using Microsoft BitLocker on a system running Windows 7 or later.

BitLocker

To enable BitLocker, in Windows Explorer right-click on the USB storage device to be encrypted and select **Turn BitLocker on**.



BitLocker will start to initialize the storage device, then will ask you to provide a password.



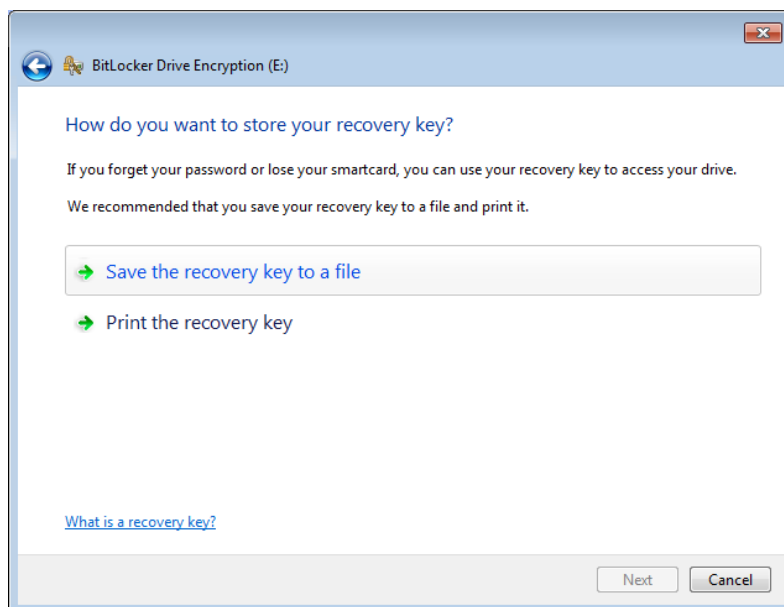
*NOTE: For Windows 10 you may be asked how much of the storage device you wish to encrypt. The options are used space only or entire drive. If this is a brand new device, you can select the **used space** option. Otherwise, it's safest to choose **entire drive**.*

*NOTE: For Windows 10 you may also be asked whether you want to use the newer XTS-AES encryption. If the device may be used on machines running older versions of Windows choose the **Compatible Mode** option.*

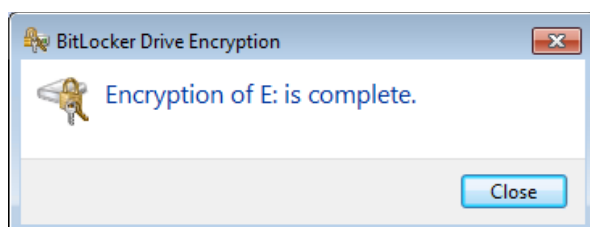
Recovery Key

You will then be asked how you would like to store your recovery key. This is an important step, as the key will be required if you forget the password chosen above.

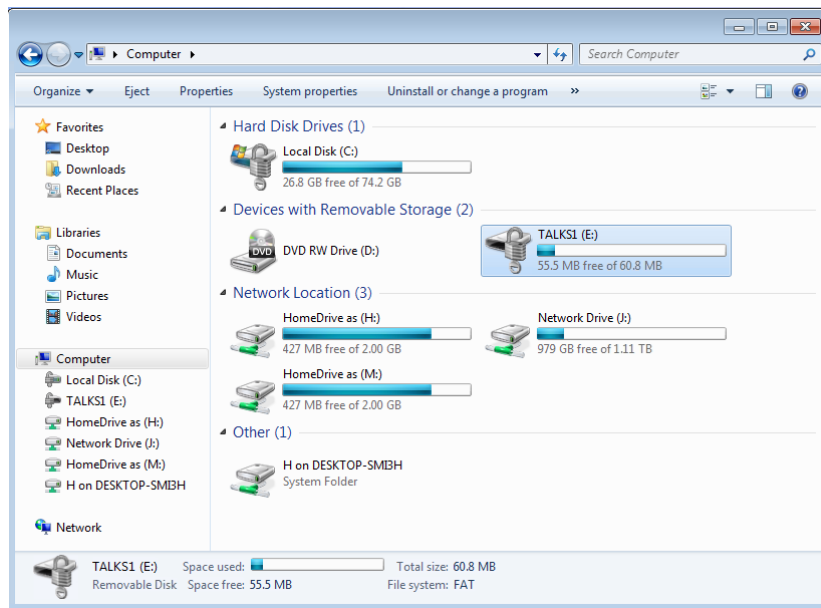
We recommend that you store the recovery key in a secure network drive, on another memory stick, or print a copy and keep it in a safe place. For obvious reasons, the system will not allow storing the key on the device you are encrypting!



Once the recovery key is saved you're ready to encrypt the device. The system will show a progress bar and notify you once complete.

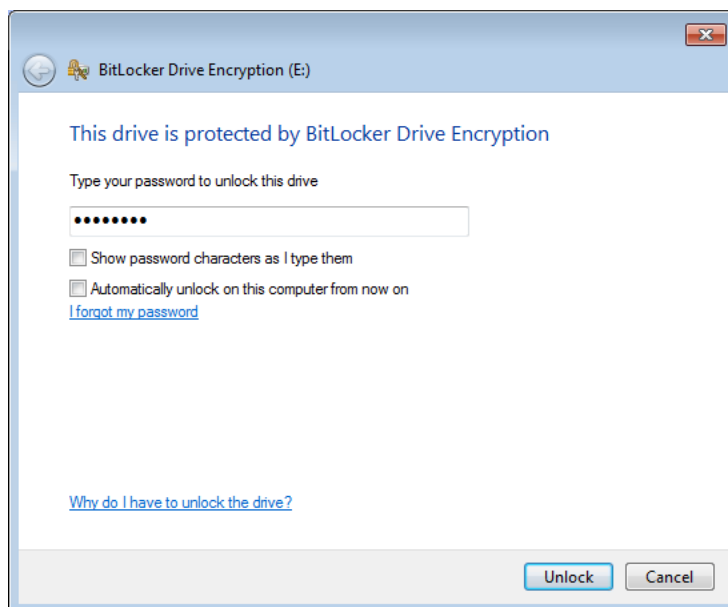


You'll notice in Windows Explorer there's now a padlock on the device - this confirms that BitLocker is enabled for this device.



Using The Device

When you insert or connect the USB storage device, you'll be asked to enter the password to unlock it. You also have the option to allow the computer to automatically unlock the device. Do this only on computers that you own or have an account on, as anyone who can access your account can then access the device.



If you've forgotten your password then you can unlock the device using the recovery key.