

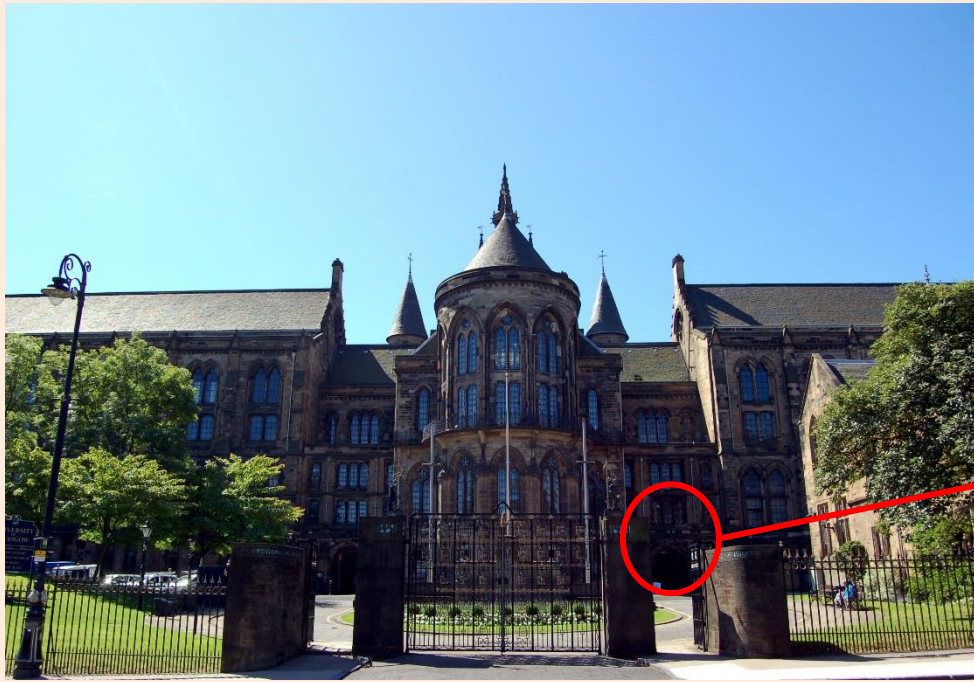


What to expect at The Hunterian Museum



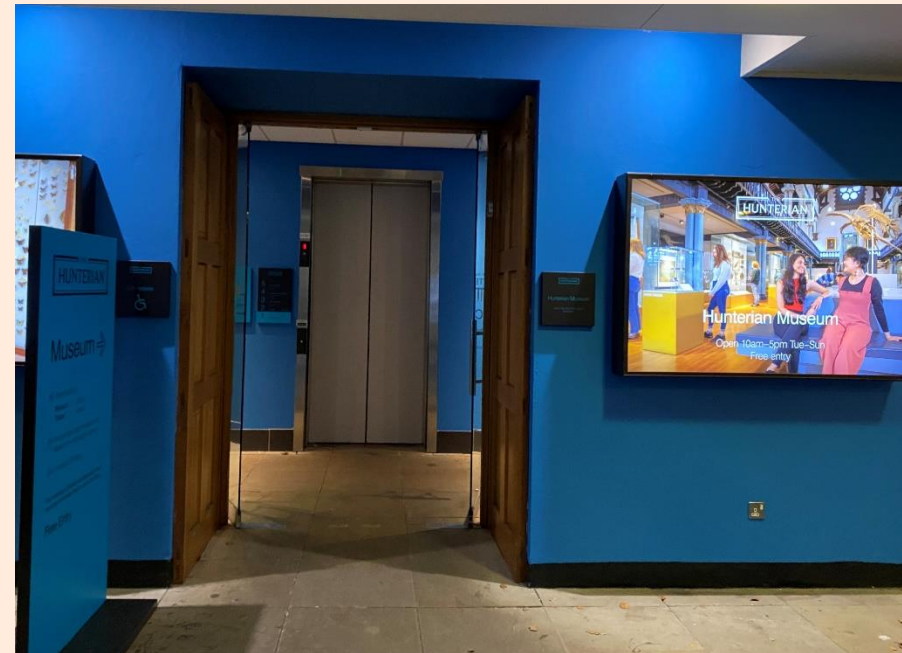
At the Hunterian Museum there is something for everyone.

There are animals, archaeology, palaeontology, medical and science collections, as well as world and ancient cultures on display.



The Hunterian Museum entrance is located in the University Main Building and is accessed via this archway.

Come and have a look inside.





There is one flight of stairs, these are beside the lift and can also be used to reach The Museum from the ground floor.



They take you to the cloisters where you will see signs pointing to The Hunterian.



Once in the cloisters there are wooden doors with a sign pointing to The Hunterian. You enter through the doors and go up the stairs. This takes you to the main entrance.



There is also a lift to The Hunterian Museum.

The Museum is on the 4th floor.



Ladies and Accessible toilets are on the right facing the lift

The toilets for the Museum are located on the 2nd floor.

There are Ladies, Gents and a separate Accessible toilet

To access these please take the lift to this floor .



Gents toilets are on the left facing the lift



The fire alarm is a loud continuous siren noise. This will only ring if visitors have to leave quickly.

There are two fire exits. One is beside the reception desk. One is behind the lift at the back of the hall.

Our staff will direct you out and let you know when it is safe to return.



If you arrive via the stairs, then you will arrive in the first exhibition space.

There are lots of Roman objects in this room.

It is lit with natural lighting and lights on the objects.



If you arrive from the lift, you will arrive in this room.

It is quiet with bright lights.



This is the reception desk. If you need any help, there is always someone here that is happy to help you.



This is our staff uniform.

If you have any questions during your visit, our staff are happy to help you!

We have student volunteers who run tours. Sometimes they approach visitors to ask if they would like to join the tour.



There are some interactive screens and videos playing in the museum.

The videos change and all have subtitles.



Next to the Antiquities and Collecting display is the entrance to the Main Hall.

It is through this doorway.



In this linking room, there is lots of space to move around.

There are lit-up display windows with objects inside.



This is the Main Hall.

There is seating available in the middle of the room.

You can sit and look at the displays or just relax.



Sometimes we have talks or events in this space. The museum can be busy and noisy during these events.

There are student-led tours held often.

You can ask our staff when these events take place. Events are also listed on our website:

<https://www.gla.ac.uk/hunterian/visit/events/>



There are folding stools available.

You can take and use them in any part of the museum.

There are also chairs with backs if you need them

There is a manual wheelchair in case someone needs it



Some of our objects have 'do not touch' signs.

This is because they are very fragile. You can look at them for as long as you like.



Sometimes our objects are not on display.

There will be signs to tell you where they are and why they are not on display.

You can contact us to check if particular objects are there. We are happy to help you.



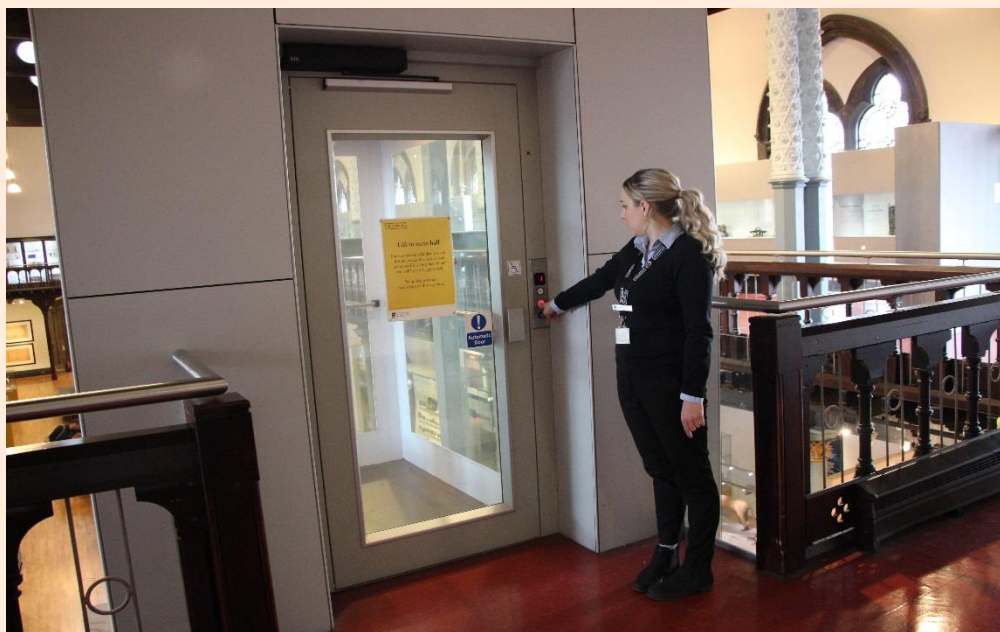
There are staircases at the front and back of the hall.

You can go up these to see the exhibitions upstairs.



There is also a lift available at the back of the hall.

Please let a member of staff know if you need to use the lift.

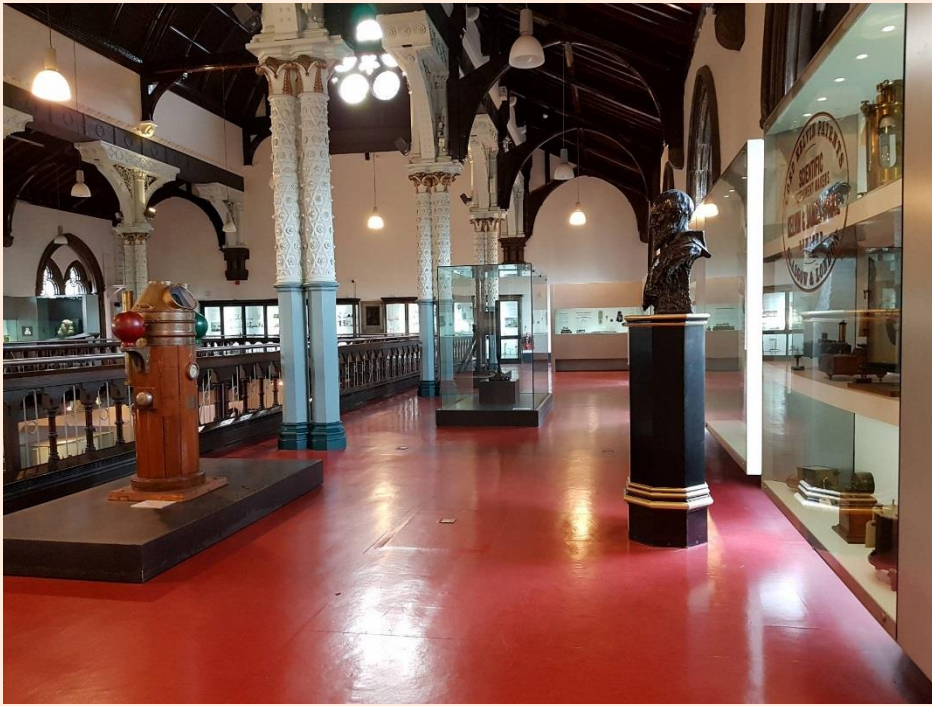


We are happy to help you.



Upstairs you will find displays about the history of science and medicine.

On one side there are medical objects including jars with medical specimens and tools.

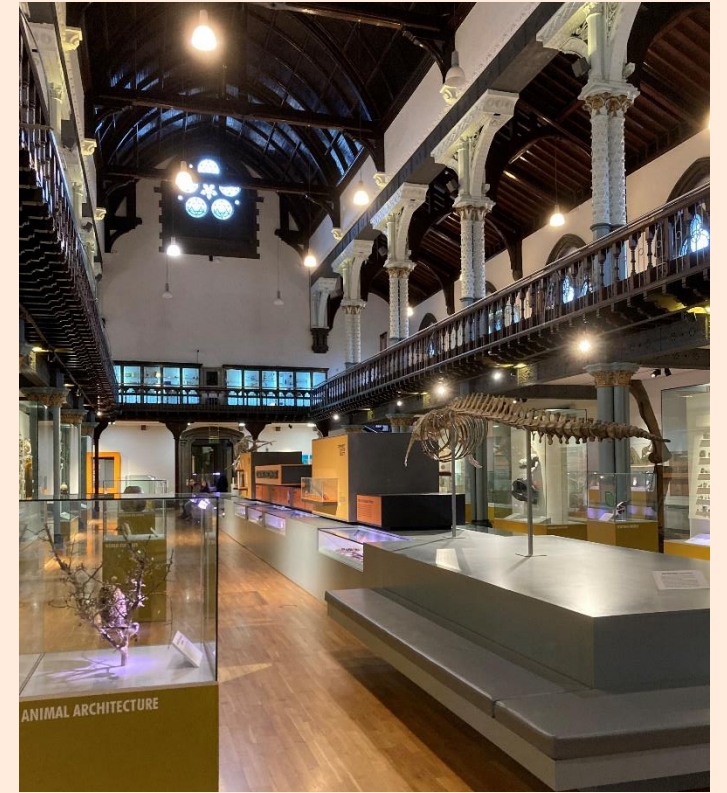


On the other side there are scientific displays such as objects once used for teaching science.

There is a mixture of natural and artificial lighting.



There is usually a member of staff on the balcony who is happy to answer any questions you have.



We hope you enjoy your visit!

If you have any further questions or requirements for your visit, please contact us by calling 0141 330 4221 or emailing hunterian-enquiries@glasgow.ac.uk